

7.

Musical notation for exercise 7, consisting of two staves. The first staff is in 3/4 time and contains a sequence of eighth notes with beams. The second staff contains a sequence of quarter notes and eighth notes with beams, ending with a half note.

(pickups and upbeats)

8.

Musical notation for exercise 8, consisting of one staff in common time (C) with a sequence of eighth notes and quarter notes.

9.

Musical notation for exercise 9, consisting of one staff in common time (C) with a sequence of eighth notes and quarter notes, including a dotted quarter note.

10.

Musical notation for exercise 10, consisting of two staves in common time (C). The first staff contains eighth notes and quarter notes. The second staff contains eighth notes and quarter notes.

(dotted figures)

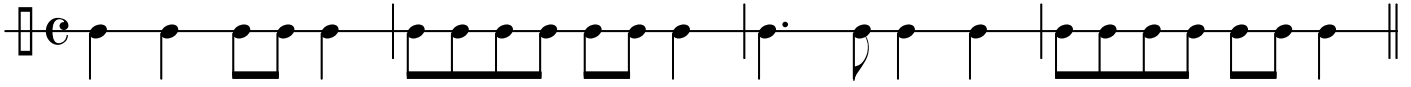
11.

Musical notation for exercise 11, consisting of one staff in common time (C) with a sequence of dotted quarter notes and eighth notes.

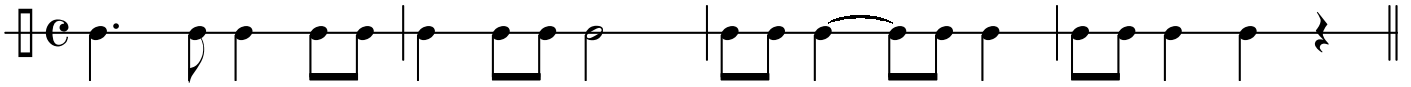
12.

Musical notation for exercise 12, consisting of one staff in common time (C) with a sequence of eighth notes and quarter notes.

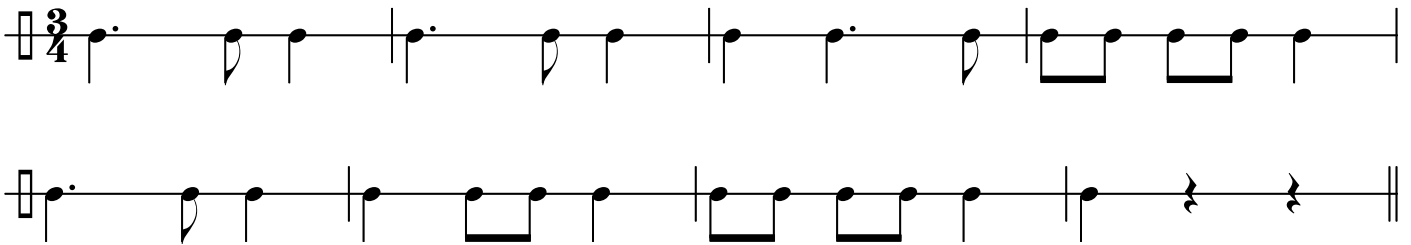
13.



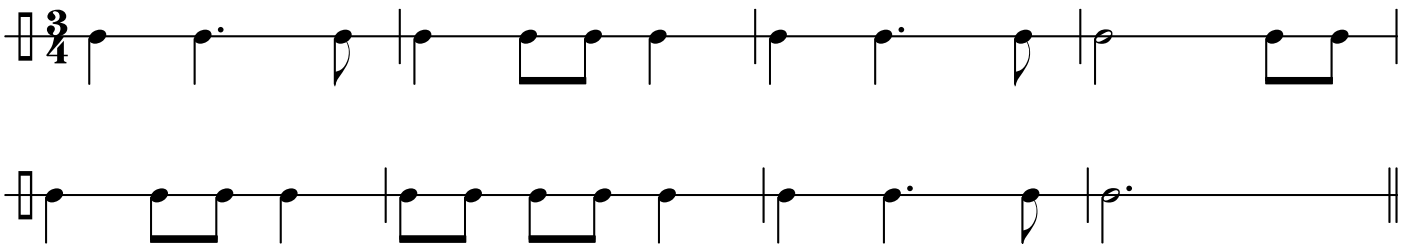
14.



15.

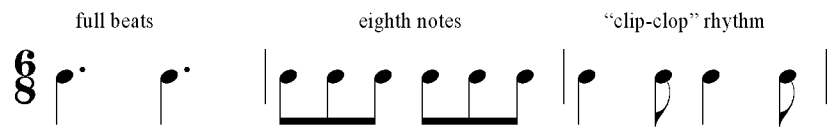


16.



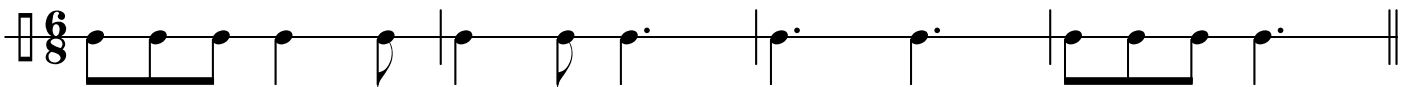
B. 6/8 and 9/8

Remember that these 6/8 rhythms are built of a few basic units:

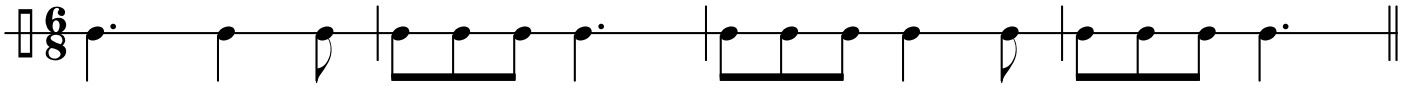


If you can do these, you can do any of the following passages!

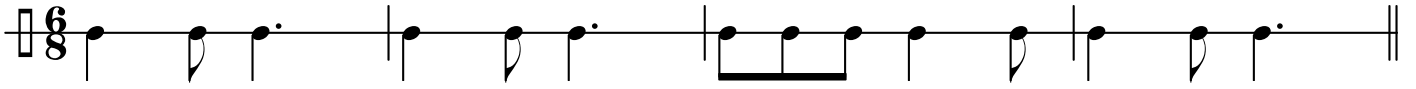
17.



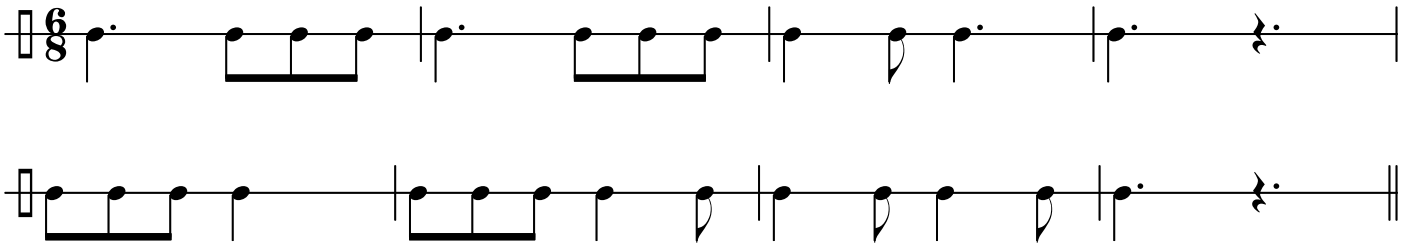
18.



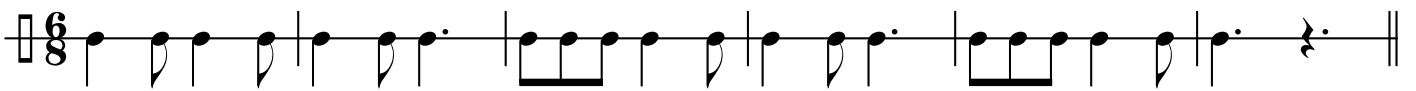
19.



20.



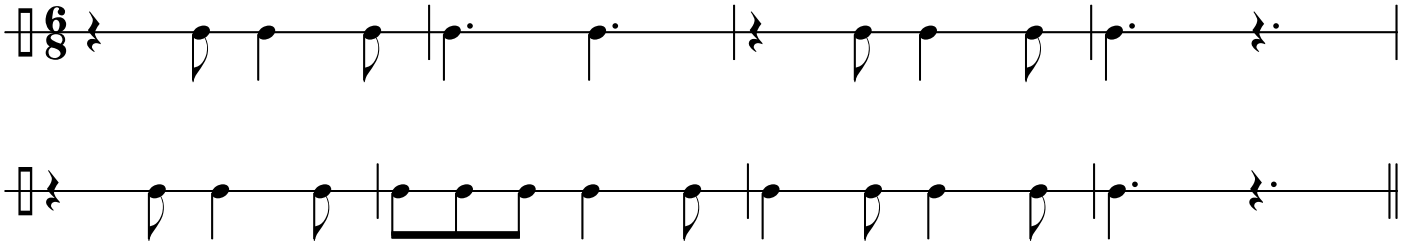
21.



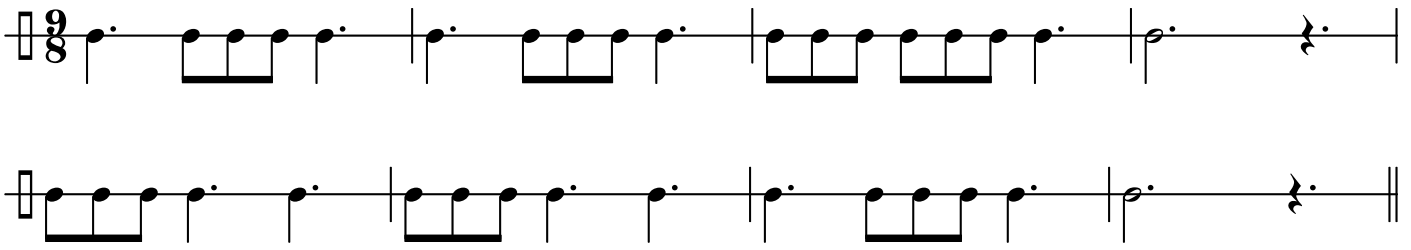
22.



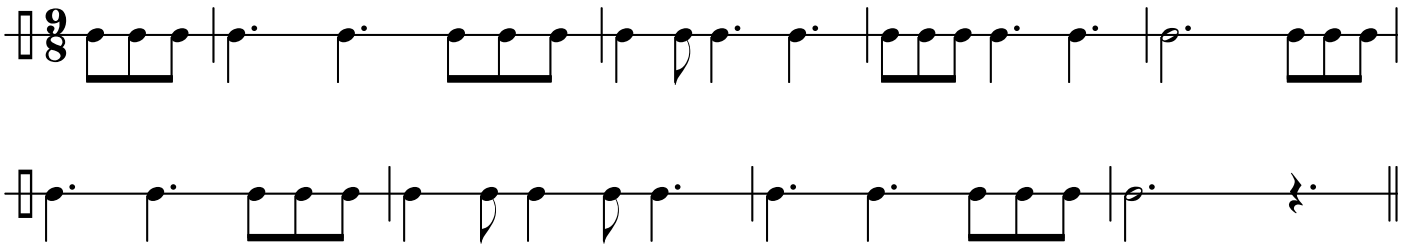
23.



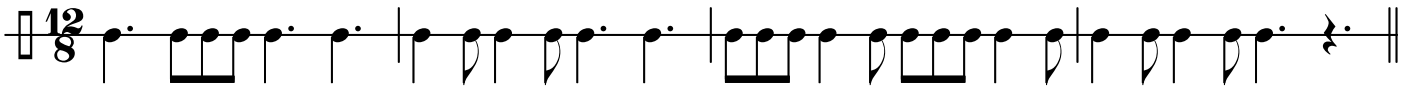
24.



25.



26.

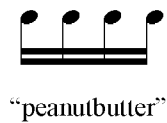


27.



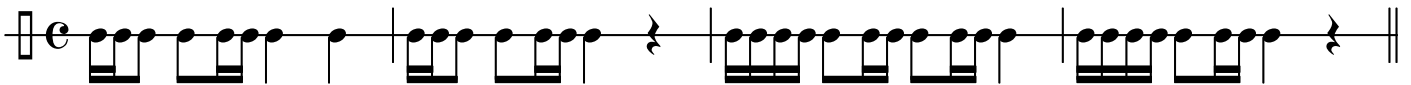
C. Using 16th notes

Once again these passages are all built of a few simple rhythmic cells. I'll even assign them silly "word cues" for easy reference.



(these particular cues are borrowed from Kazez, *Rhythm Reading*)

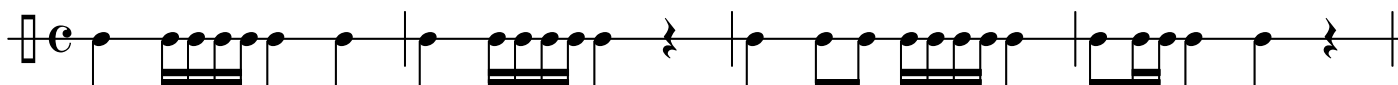
28.



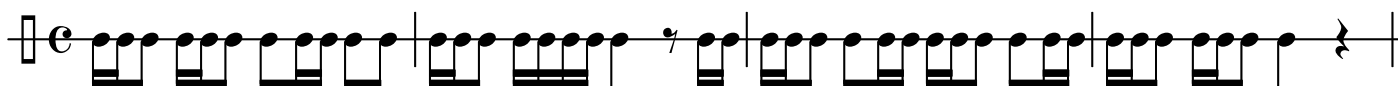
29.



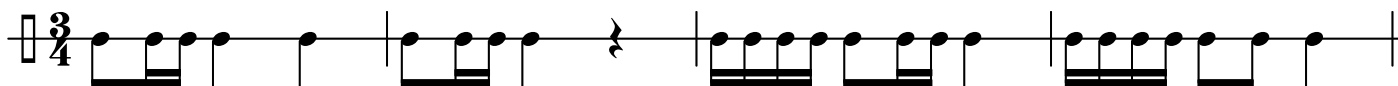
30.



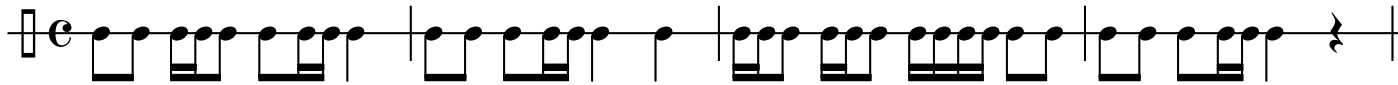
31.



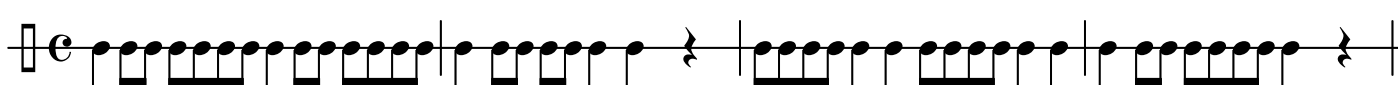
32.



33.

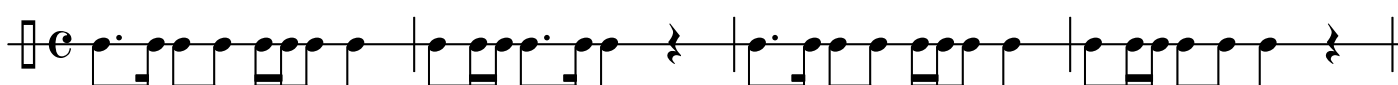


34.



(introducing the dotted-eighth-note figure)

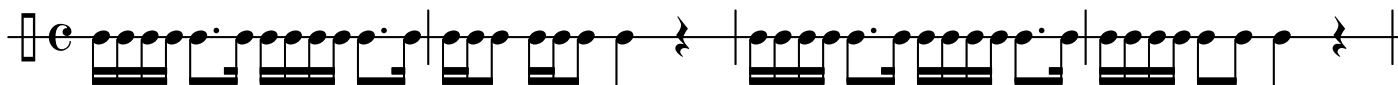
35.



36.



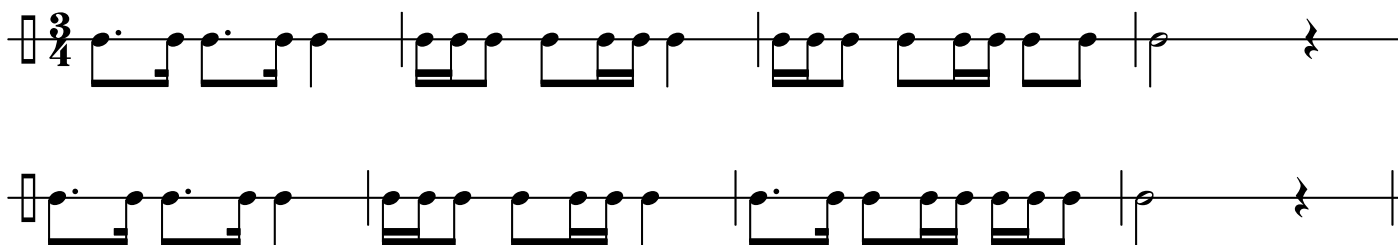
37.



38.

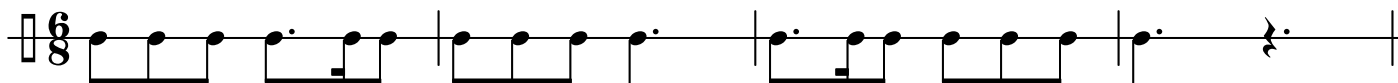


39.

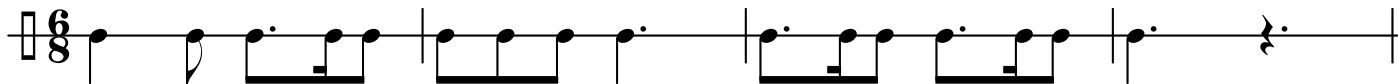


D. Return to 6/8 - adding a very graceful dotted figure

40.



41.



(adding yet another rhythmic cell with sixteenth notes)

42.

